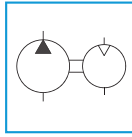


# Air-Hydraulic Power Pumps

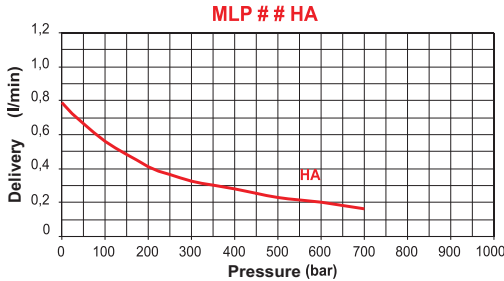
## MLP Series



Reservoir Capacity:  
**2,4 to 10 litres**

Oil Delivery at Rated Pressure:  
**0,16 litre/min.**

Maximum Operating Pressure:  
**700 bar (10,000 psi)**



**ZML14**

- Compact, lightweight & versatile.
- Unique design & exceptionally reliable for applications in tough environments.
- High efficient reciprocating air motor.
- Plastic material on the exterior and metal alloy in the interior.
- Non-adjustable maximum pressure valve provides overload protection.
- Outward oil pressure adjusted by regulating inward air pressure.
- Operating Inlet Air Pressure: 2,8 to 8,5 bar
- 2.4 litres reservoir is made of plastic. 5 & 10 litres reservoirs are made of steel.
- Use in industrial applications for lifting, maintenance & in automotive sector etc.

### Accessories

**ZML14** – Pressure Reducer for air supply.

**ZMB7** – Pressure Booster, adaptable to MLP21HA to multiply outward oil pressure (Ratio 4:1). Inlet 3/8" NPT & Outlet 3/4"-16 UNF.

**RP52** – Gauge Adaptor to mount G106L gauge type.

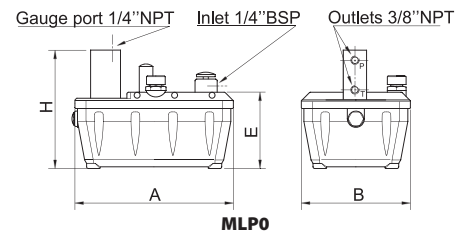
\***Air Remote Control** for MLP2 & MLP4 versions optional – Add suffix 'B'.

\***Air Remote Control Valve (ZMRP2)** equipped to MLP2 & MLP4 versions optional – Add suffix 'R'.

### SELECTION CHART

#### CHARACTERISTICS AND DIMENSIONS

Version	Suitable for Cylinder Tool	Oil Tank litres	Usable Oil Volume litres	MODEL	Dimensions (mm)				Weight kg
					A	B	D	H	
With P and T Outlets block	According to the chosen on-line valve	2,4	1,9	<b>MLP01HA</b>	280	190	136	201	4,7
		5	4	<b>MLP02HA</b>	315	270	156	221	13,1
		10	8	<b>MLP03HA</b>	420	385	156	221	20,5



Other Working Pressures of 100, 350, 1000, 1500 & 2100 bar available upon request.

#### CHARACTERISTICS AND DIMENSIONS

Version	Suitable for Cylinder Tool	Oil Tank litres	Usable Oil Volume litres	MODEL	Dimensions (mm)					Weight kg
					A	B	D	E	H	
3/3 Control Pedal Valve	Single-acting	2,4	1,9	<b>MLP21HA</b>	300	190	280	136	220	5,5
		5	4	<b>MLP22HA</b>	325	270	315	156	237	13,9
		10	8	<b>MLP23HA</b>	420	385	410	156	237	21,3
4/3 Manual Control Valve	Double-acting	2,4	1,9	<b>MLP41HA</b>	335	190	280	136	240	5,1
		5	4	<b>MLP42HA</b>	350	270	315	156	257	13,5
		10	8	<b>MLP43HA</b>	420	385	410	156	257	20,9

